

MULTIFLEX[®] BLOCK

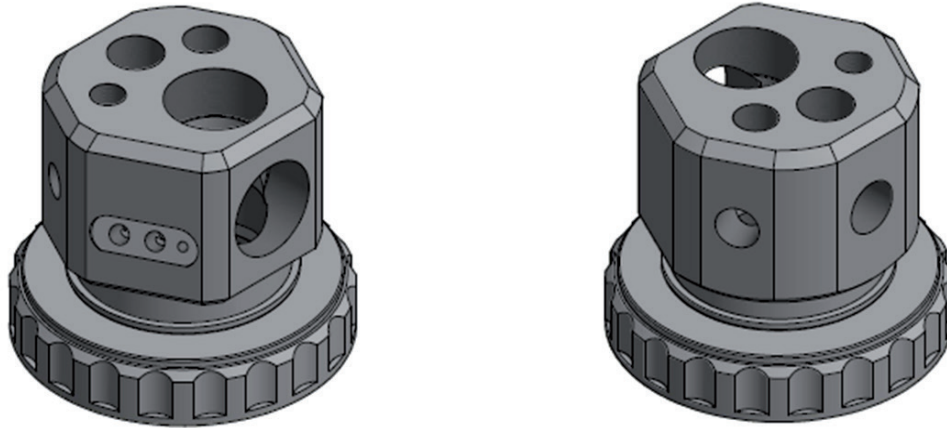
**Technical solution
for
IBC-Bulk Container**

Filling

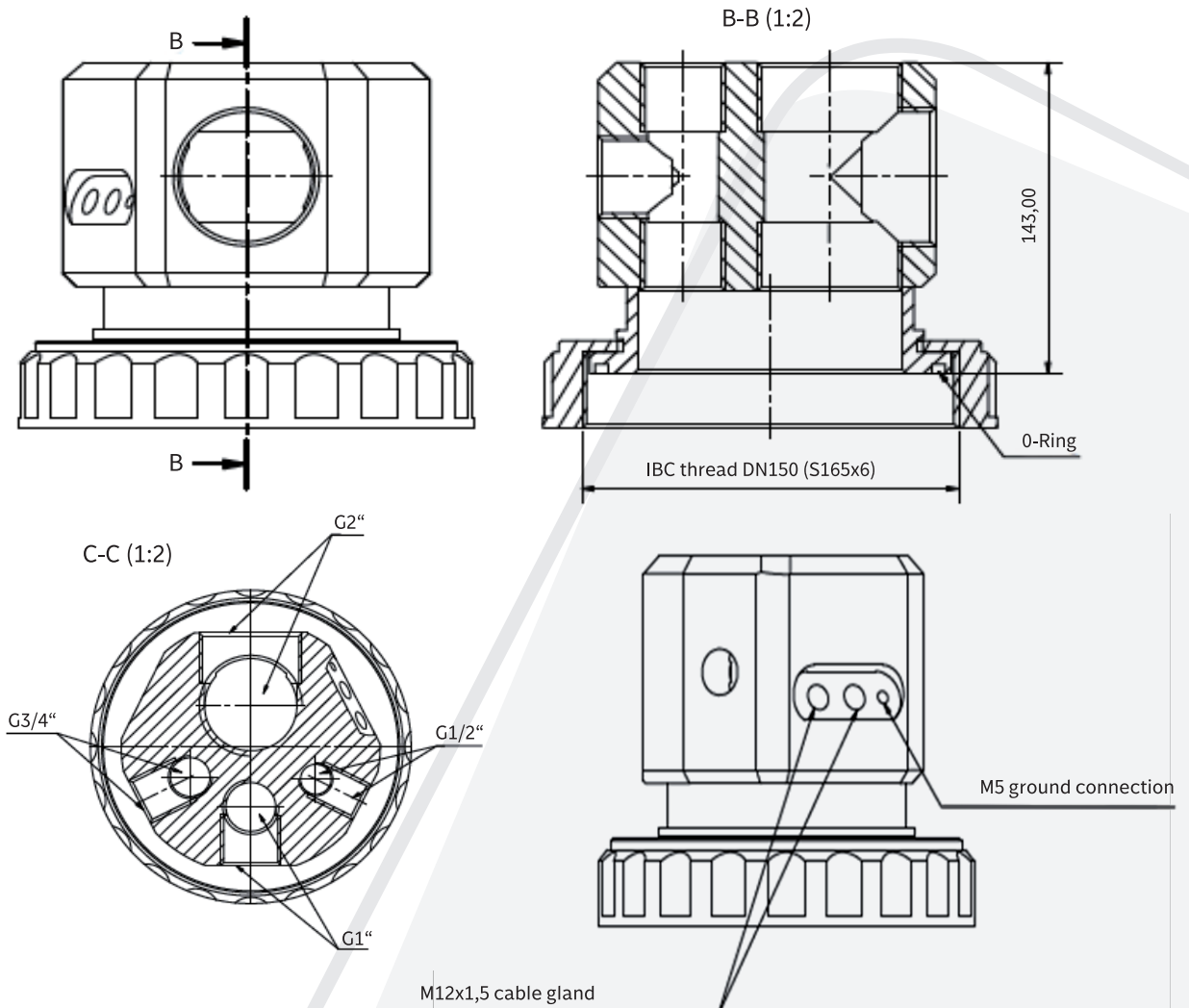
Extraction

Monitoring

3D view

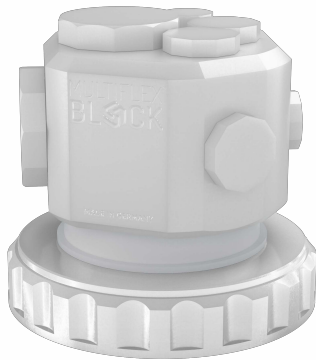


Technical details



Article description

- **trading name:** MULTI FLEX BLOCK®
- **Patent number:** EUIPO 005831021-0001



Food version in PE HD-natur (FDA compliant)



Industrial version in PE HD-natur



ATEX version in PE-EL (electrically conductive)

Application areas

- Chemical and process industry
- Foods and beverages
- Industrial chemicals
- Healthcare
- Coatings, inks and dyes
- Petrochemicals and lubricants
- Pharmaceutical and cosmetics industry

Application

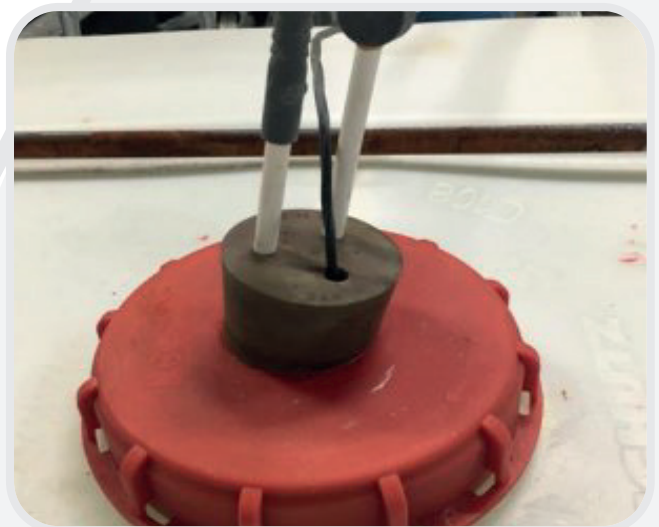
For filling, extraction and monitoring of IBC-Bulk-Containers and other chemical tanks .

Our patented MULTI FLEX BLOCK® is screwed onto the IBC container on the inspection hole DN 150 and can be equipped with various add-on parts according to the required functions.

The MULTI FLEX BLOCK® is also available in DN225.

advantages

- Easy handling and increased operational safety
- Use in the ATEX area
- Multifunctional connection options
- Easy connection to running processes
- Rotatable and gastight
- Cable entries for suction lances and level switches
- Delivery with caps and gaskets
- Extensive range of accessories for PE-natural and PE-electrically conductive fittings and connections



Negative example

Material / delivery options

The MULTI FLEX BLOCK® is available from stock at short notice in the following versions:

Standard:	PE-natural, caps PE-rot/EPDM
Food grade:	PE-natural, caps PE-natural/EPDM FDA compliant
ATEX - version:	PE-EL (electrically conductive), caps PE-EL / EPDM ATEX compliant (suitable for ATEX-Zone 1+2)

Flow medium: technically pure, neutral or aggressive liquid media

Medium temperature: 40°C

Operating pressure: pressureless operation

Seals

- EPDM:** Standard
- EPDM:** FDA compliant (food industry)
- FPM:** on request
- FPM cold:** for cold applications up to -25°C, on request

Connection options

Connections:

- Shape: T-threading
- From the top: G ½“, G ¾“, G 1“, G 2“
- From the side: G ½“, G ¾“, G 1“, G 2“
2 x M12 x 1,5 for cable glands
1 x M5 for ground connection (only with ATEX - applications)
- From the bottom: G ½“, G ¾“, G 1“, G 2“

Safety note

Safe operation of the MULTI FLEX BLOCK requires that these are properly and properly used by qualified personnel in compliance with occupational health and safety (UW), safety regulations, relevant standards, guidelines or leaflets such as: B. DIN, DIN EN, DIN ISO and DVS installed, operated, maintained or repaired.

Proper use includes observance of the specified pressure and temperature limits, as well as a resistance test. For this purpose, all components in contact with the medium must be "resistant" according to the relevant resistance lists! In the case of tank systems, the use of the valve with regard to safety technical requirements must be checked by the customer. Failure to observe this note is the highest risk of injury due to escaping medium.

Cleaning instructions for the MULTI FLEX BLOCK

When used with chemicals, the relevant national and international safety regulations must be observed in order to avoid personal injury and material damage.

Suitable washing places and the personal protective equipment as well as cleaning agents adapted to the chemicals are mandatory.

Do not use cleaning agents that attack the material PE (polyethylene).

Maximum cleaning temperature: +50°C



MULTI FLEX BLOCK®

electrically conductive version

- blind plug PE-electrically conductive
- screw cap PE-electrically conductive

application examples



MULTI FLEX BLOCK®
electrically conductive version

- hose nozzle PE-electrically conductive 2 inch
- milk pipe thread PE-electrically conductive 1 1/4 inch
 - blind plug PE-electrically conductive
 - screw cap PE-electrically conductive



MULTI FLEX BLOCK® **electrically conductive version**

- spigot PE-electrically conductive 2 + 1 inch
- Kamlock female PE-electrically conductive 1 1/4 inch
 - blind plug PE-electrically conductive
 - screw cap PE-electrically conductive



MULTI FLEX BLOCK® **electrically conductive version**

- spigot PE-electrically conductive 2 + 1 inch
- Kamlock male PE-electrically conductive 1 1/4 inch
 - blind plug PE-electrically conductive
 - screw cap PE-electrically conductive



MULTI FLEX BLOCK®
version FDA and EU 10/2011 conformity

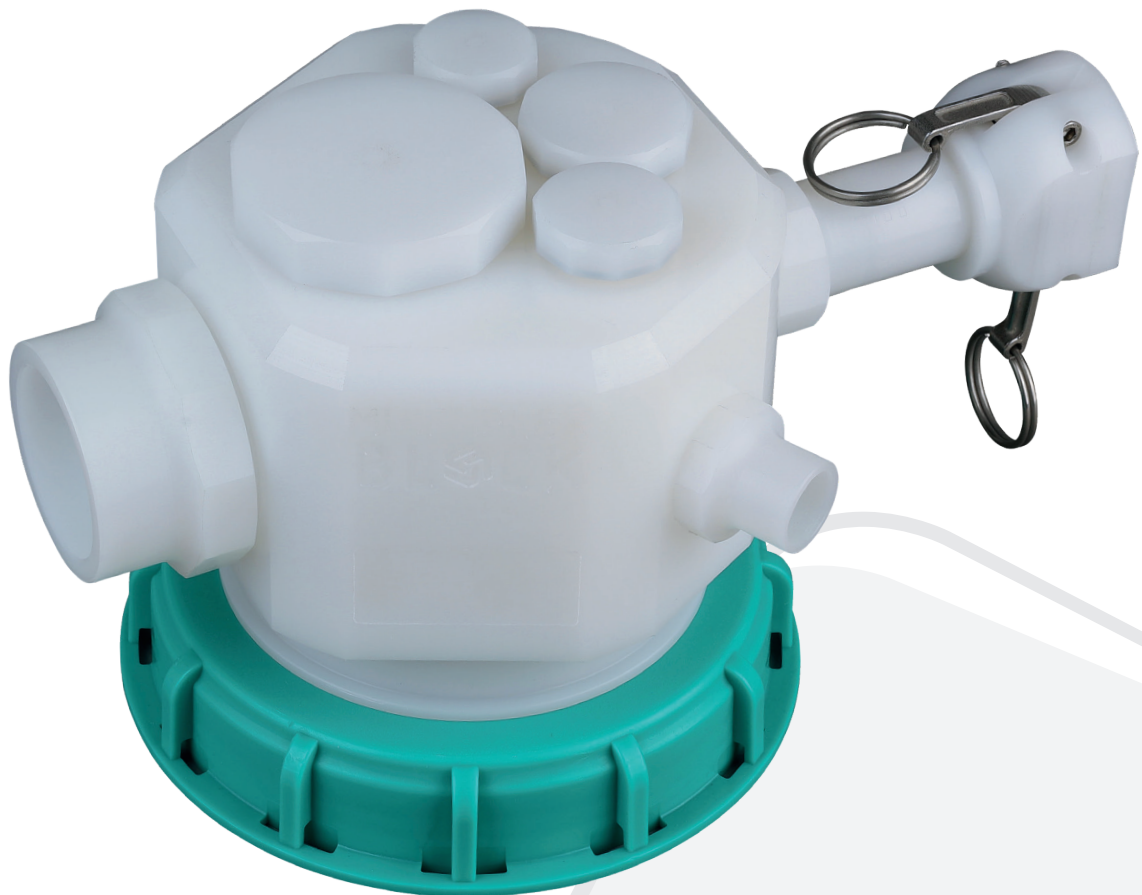
- blind plug PE-natural
- screw cap PE



MULTI FLEX BLOCK®

version FDA and EU 10/2011 conformity

- hose nozzle PE-natural 2 inch
- milk pipe thread PE-natural 1 1/4 inch
- blind plug PE-natural
- screw cap PE



MULTI FLEX BLOCK®
version FDA and EU 10/2011 conformity

- spigot PE-natural 2 + 1 inch
- Kamlock female PE-natural 1 1/4 inch
- blind plug PE-natural
- screw cap PE



MULTI FLEX BLOCK®
version FDA and EU 10/2011 conformity

- spigot PE-natural 2 + 1 inch
- Kamlock male PE-natural 1 1/4 inch
- blind plug PE-natural
- screw cap PE

attachments

PE electrically conductive



PE-el milk pipe thread adapter,
10 cornered



PE-el reducer, 10 cornered



PE-el reducer, 10 cornered



PE-el hose nozzle with male thread,
10 cornered



PE-el blind plug, 10 cornered



PE-el double thread,
10 cornered



PE-el male thread, 10 cornered



PE-el PG13,5



PE-el Tri-Clamp-Connection



PE-el Camlock-Connection

attachments

PE-natural, FDA conformity



PE-natural milk pipe thread-adapter, 10 - cornered



PE-natural reducer, 10 - cornered



PE-natural reducer, 10 - cornered



PE-natural hose nozzle cornered with male thread



PE-natural blind plug, 10 - cornered



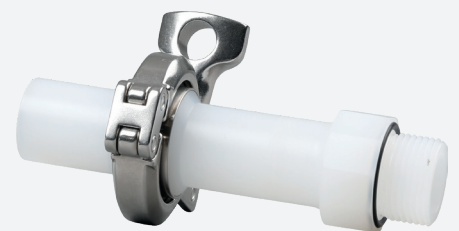
PE-natural double thread, 10 - cornered



PE-natural male thread, 10 - cornered



PE-natural PG13,5



PE-natural Tri-Clamp-connection



PE-natural Camlock-connection